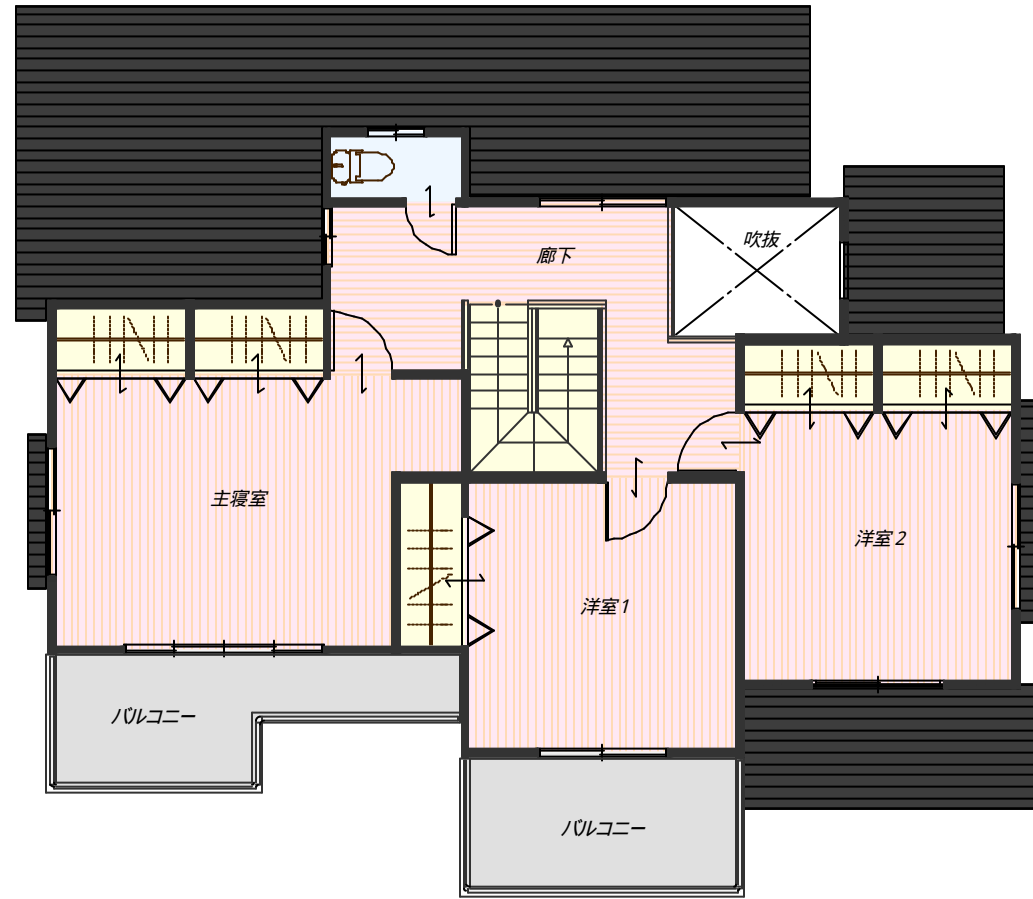
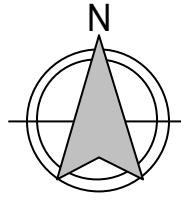


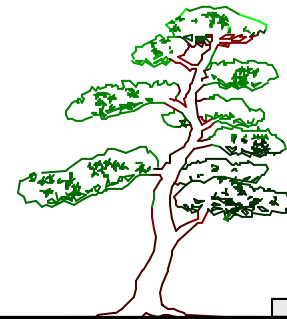
1F plan s= 1:100

建築面積 : 110.131 $m^2$  (33.31坪)  
 1 F : 107.652 $m^2$  (32.56坪)  
 2 F : 70.381 $m^2$  (21.29坪)  
 延床面積 : 178.034 $m^2$  (53.86坪)





2F plan s= 1:100



elevation s= 1:100

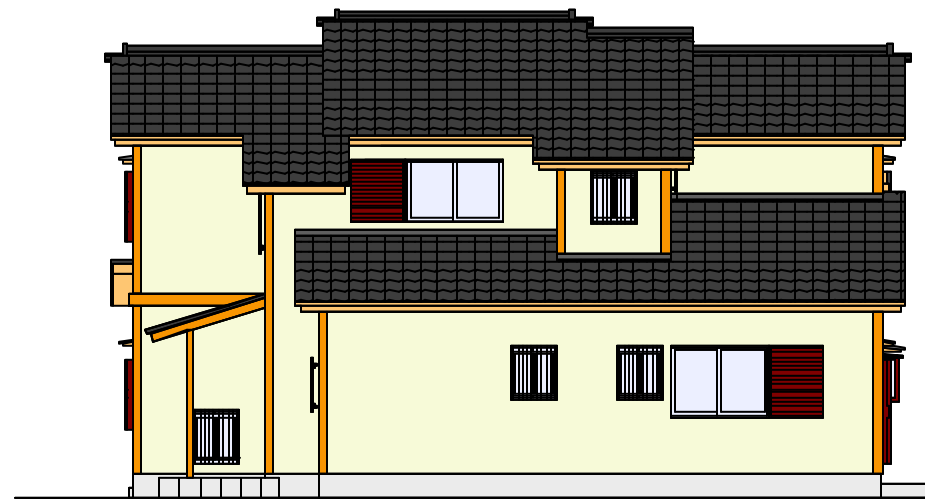
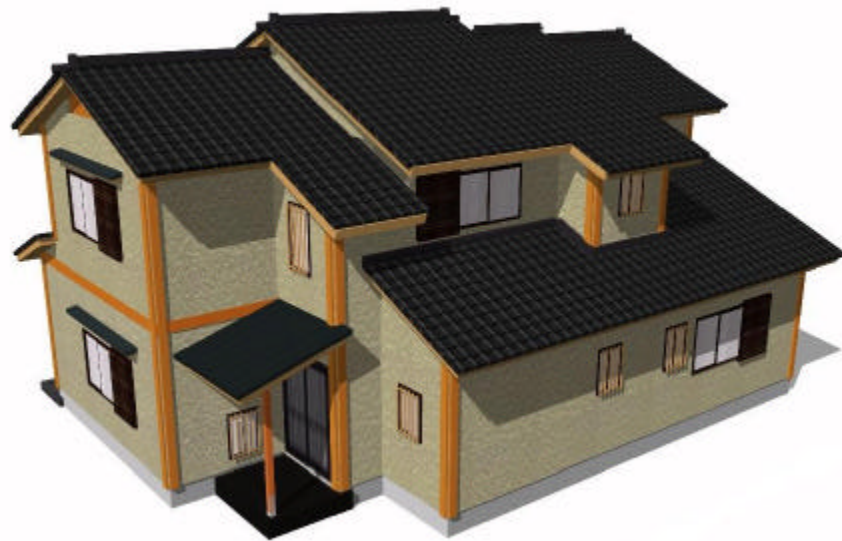




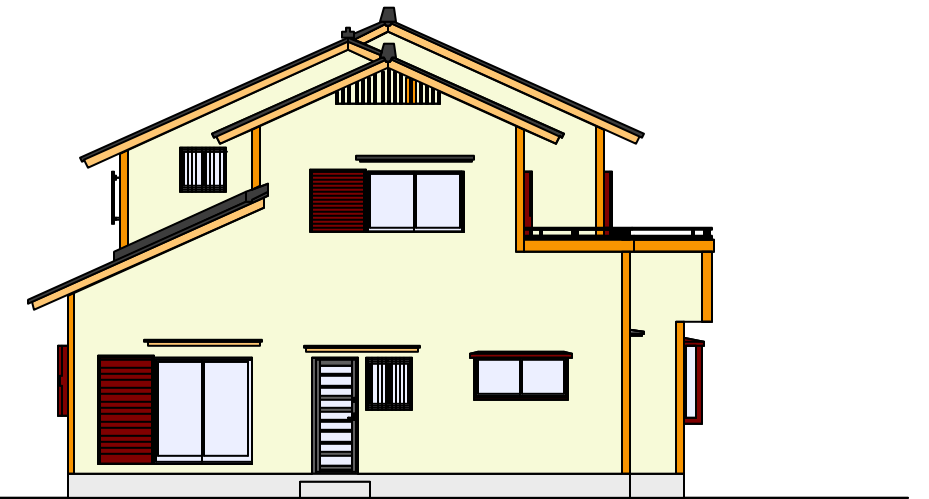
南立面图



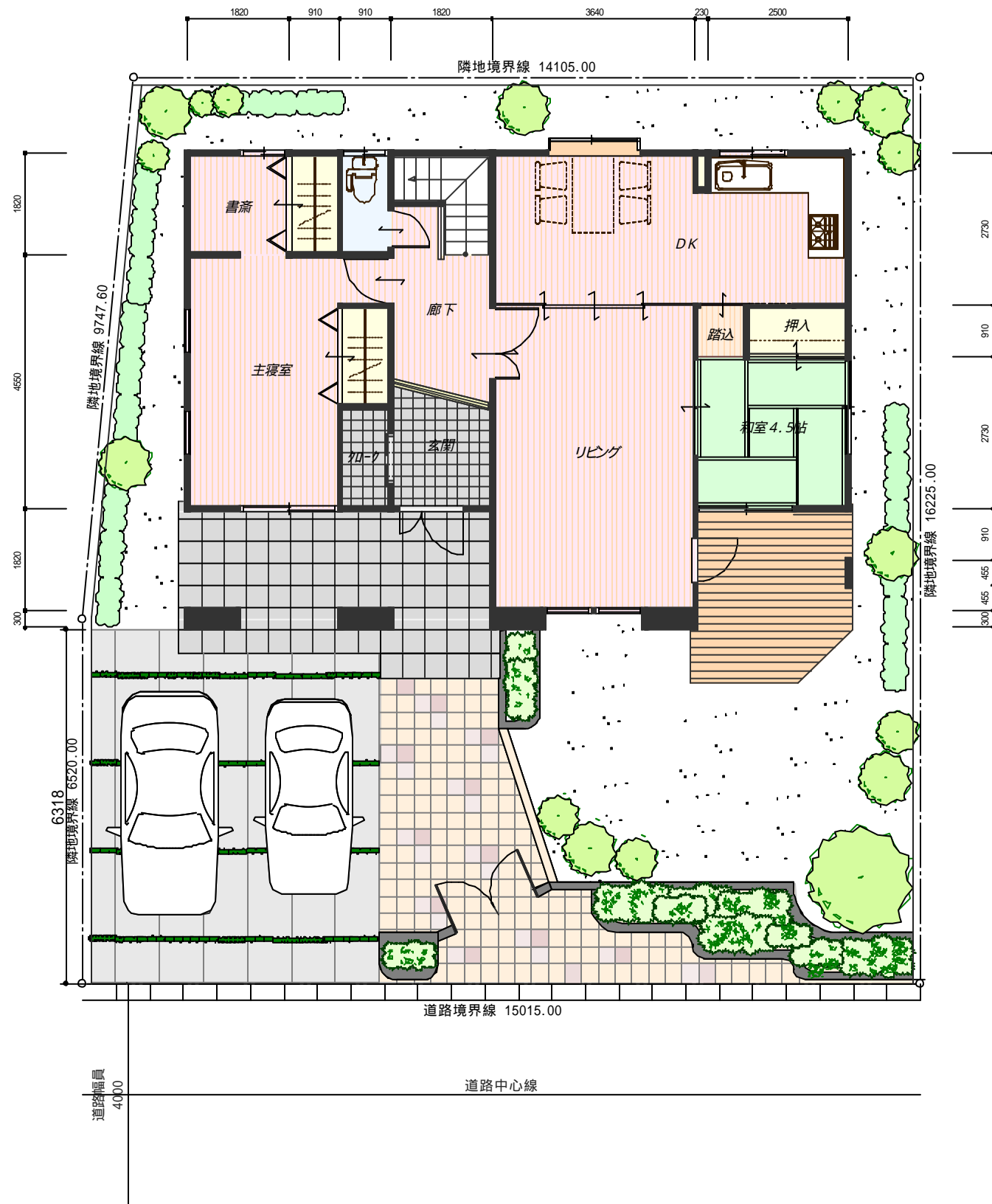
东立面图



北立面图



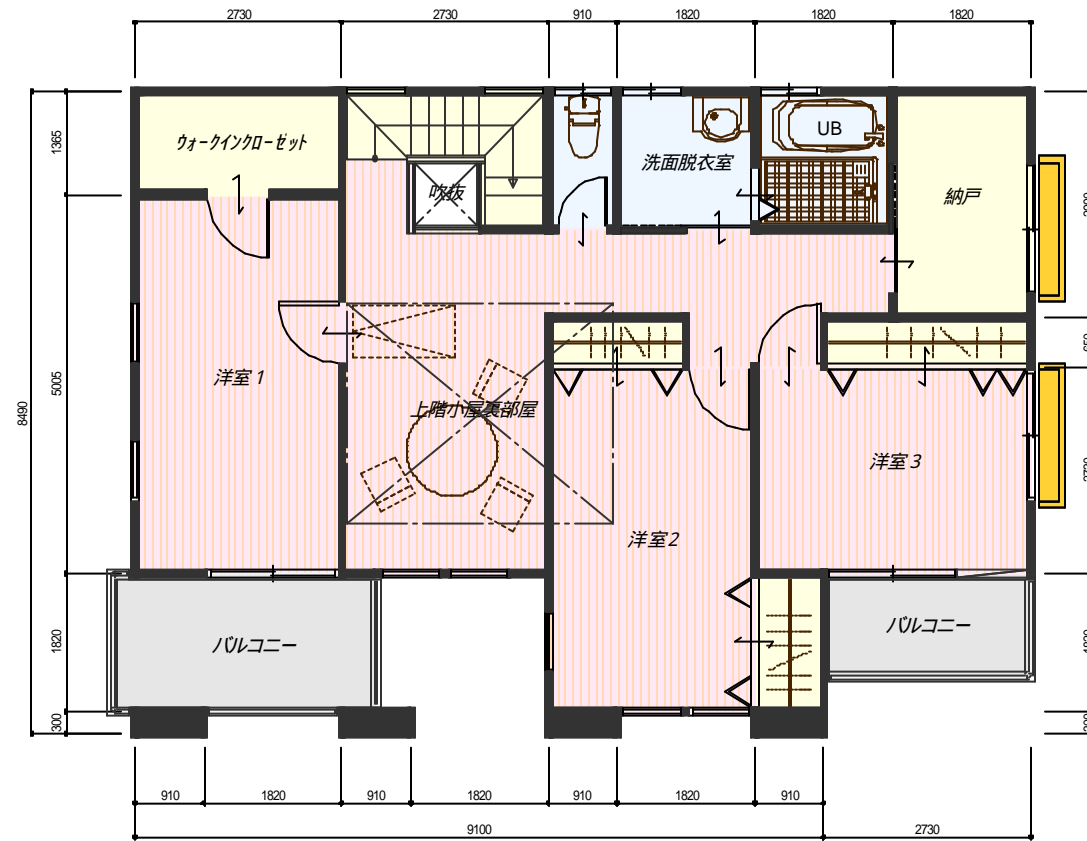
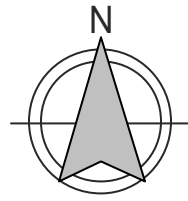
西立面图



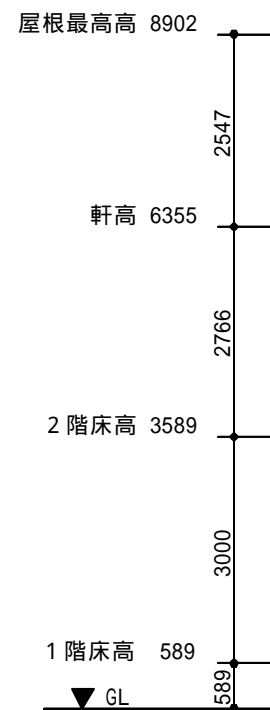
建築面積： 97.401 $m^2$  (29.46坪)  
 1 F : 81.981 $m^2$  (24.80坪)  
 2 F : 81.152 $m^2$  (24.55坪)  
 延床面積： 163.134 $m^2$  (49.35坪)

1F plan s= 1:100





2F plan s= 1:100



elevation s= 1:100





SOUTH ELEV.



EAST ELEV.



NORTH ELEV.



WEST ELEV.